



Quick Start Guide

V1.0

QUEST

Thermal Imaging
Binoculars

QUEST H50R / QUEST H35R / QUEST L35R

Important Safety Information

Environmental influences

Never point the lens of the device directly at intense heat sources such as the sun or laser equipment. The objective lens and eyepiece can function as a burning glass and damage the interior components.

Risk of swallowing

Do not place this device in the hands of small children. Incorrect handling can cause small parts to come loose which may be swallowed.

Safety instructions for use

- Handle the device with care: rough handling may damage the battery.
- Do not expose the device to fire or high temperatures.
- Install the batteries correctly according to the instruction on the device. Reverse connection is prohibited.
- The battery capacity decreases when operated in a cold ambient temperature. This is not a fault and occurs for technical reasons.
- Always store the device in a dry, well-ventilated space. For prolonged storage, remove the batteries.
- The recommended temperature for using this product is -20°C to $+50^{\circ}\text{C}$. Otherwise, it will affect the service life of the product.
- Do not store the device for long periods at temperatures below 20°C or above 50°C , or this will permanently reduce the capacity of the battery.
- If the device has been damaged or the battery is defective, send the device to our after-sales service for repair.

EU Compliance Statement

Wireless transmitter module frequency range:

WLAN: 2.412-2.472GHz (For EU)

Wireless transmitter module power < 20dBm (only for EU)



We, Inlumen Technologies Co., Ltd. hereby declares that the radio equipment types QUEST are in compliance with the Directives 2014/53/EU and 2011/65/EU.

Disposal of batteries



2023/1542 (Battery Regulation): This product contains a battery that cannot be disposed of as unsorted municipal waste in the European Union. For battery details, refer to the documentation of the specific product. The battery is marked with this symbol, which may include Cd (indicating cadmium), Pb (indicating lead), or Hg (indicating mercury). For proper recycling, please return the battery to your supplier or send it to a designated collection point. For more information, visit www.recyclethis.info.

User information on the disposal of electrical and electronic devices (private households)



2012/19/EU (WEEE directive): Products marked with this symbol cannot be disposed of as unsorted municipal waste in the European Union. For proper recycling, return this product to your local supplier upon the purchase of equivalent new equipment, or dispose of it at designated collection points. For more information see: www.recyclethis.info.

For business customers within the European Union

Please contact your dealer or supplier regarding the disposal of electrical and electronic devices. He will provide you with further information.

Information on disposal in other countries outside of the European Union

This symbol is only applicable in the European Union. Please contact your local authority or dealer if you wish to dispose of this product and ask for a disposal option.

Intended use

The device is intended for displaying heat signatures during nature observation, remote hunting observations and for civil use. This device is not a toy for children.

Use the device only as described in this operating manual. The manufacturer and the dealer accept no liability for damages which arise due to non-intended or incorrect use.

Function test

Before use, please ensure that your device has no visible damage.

Test to see if the device displays a clear, undisturbed image.

Check that the settings for the thermal imaging monocular are correct.

Installing/Removing the battery

The Quest series thermal imaging binocular can install one 18650 battery, refer to section battery installation for details.

Laser Warning

QUEST H50R / QUEST H35R / QUEST L35R

CLASS 1 CONSUMER LASER PRODUCT

EN 50689:2021



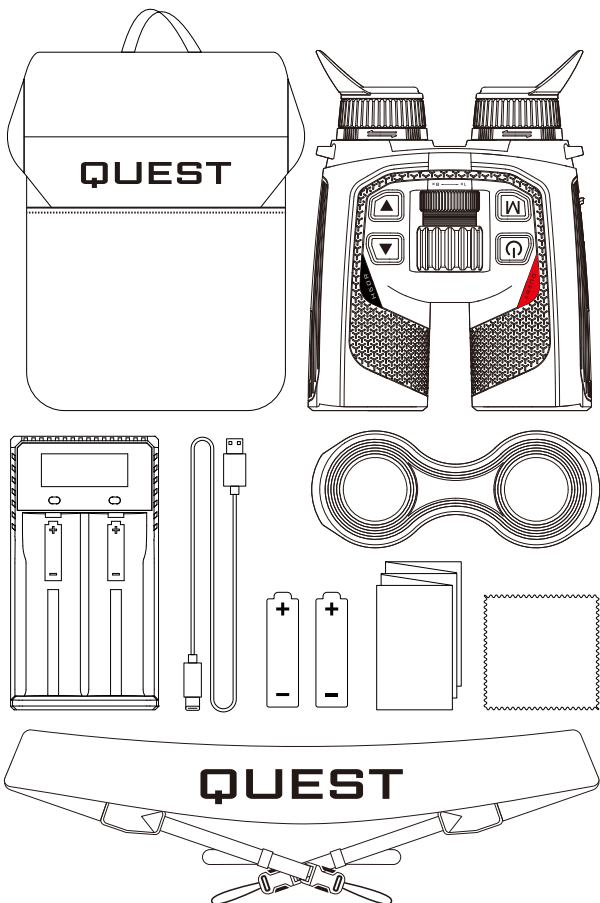
LASER APERTURE



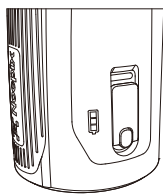
QUEST Quick Start Guide

EN	Thermal Imaging Binoculars	1-12
DE	Thermal Imaging Binoculars	13-24
IT	Binocolo per immagini termiche	25-36
FR	Jumelles d'imagerie thermique	37-48
ES	Binocular de Imagen Térmica	49-60
CZ	Termovizní binokuláry	61-72
PL	Lornetka termowizyjna	73-84
SV	Termisk avbildning kikare	85-96
HU	Hőképképző távcső	97-108
PT	Binóculos de Imagem Térmica	109-110

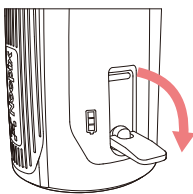
Accessories



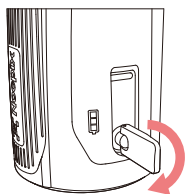
Battery Install



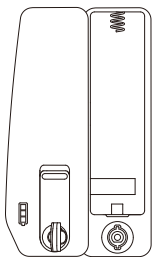
1



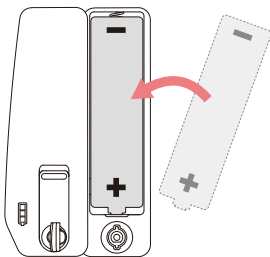
2



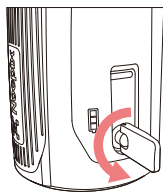
3



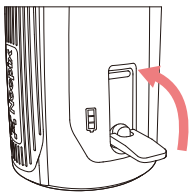
4



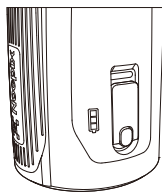
5



6

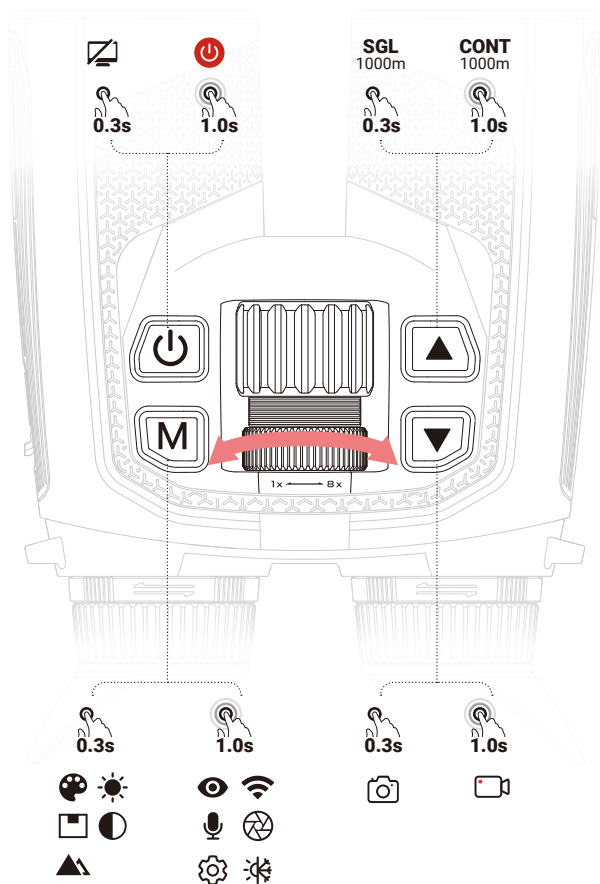


7



8

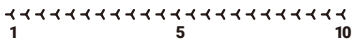
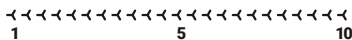
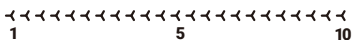
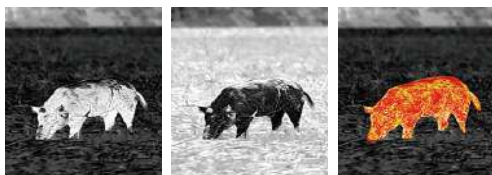
Button Descriptions



Button Descriptions



Shortcut Menu

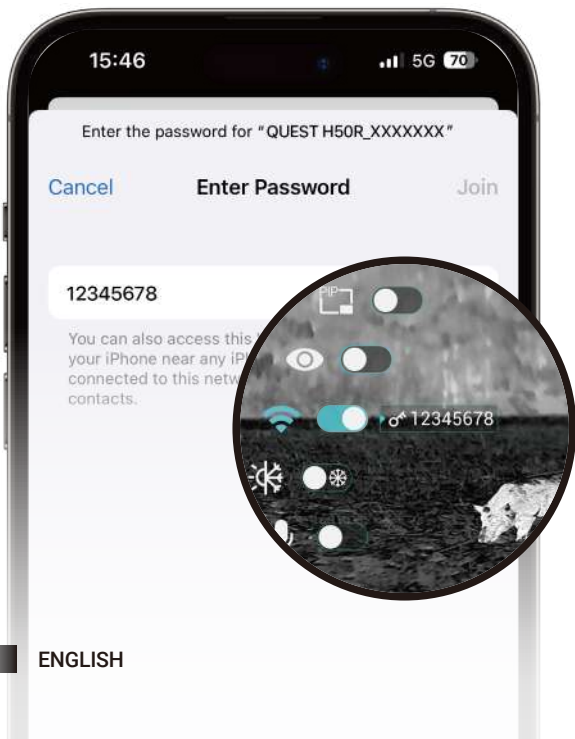


| Main Menu





| App





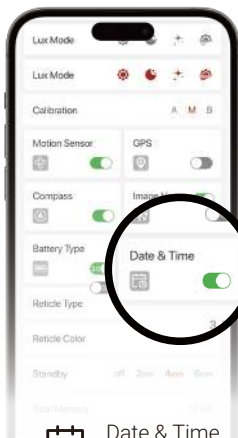
Firmware
upgrade



Real-time image
transmission



Device file



Date & Time
calibration

Specifications

Model	QUEST H50R	QUEST H35R
Resolution, Pixels	640×512, 12μm	
NETD, mK	<15	
Frame Rate, Hz	60	
Objective Lens, mm	50 F1.1	35 F0.9
Field of View (H×V), °/m at 100m	8.8×7.0/ 15×12	12.5×10/ 22×18
Magnification, ×	4~32	3~24
Detective Range, m (Target size: 1.7m × 0.5m, P(n)=99%)	2600	1800
Eye Relief, mm	25	
Exit Pupil Diameter, mm	10	
Diopter, D	±5	
Display	AMOLED 1920×1200	
Battery Type	Built-in battery/4200mAh + replaceable 18650 battery	
Max. Operation Time, (t=22°C) h	6	
Safety Class For Laser	Class 1	
LRF, m	1000	
MIC	Support	
Memory Capacity, GB	64	
IP Rating	IP67	
Operating Temperature, °C	-20 ~ +55	
Weight, g (Without Replaceable Battery)	<700	
Dimension, mm	175.4×138×66	

Model	QUEST L35R
Resolution, Pixels	384×288, 12μm
NETD, mK	<15
Frame Rate, Hz	60
Objective Lens, mm	35 F0.9
Field of View (H×V), °/m at 100m	7.5×5.7/13×10
Magnification, ×	5~40
Detective Range, m (Target size: 1.7m × 0.5m, P(n)=99%)	1800
Eye Relief, mm	25
Exit Pupil Diameter, mm	10
Diopter, D	±5
Display	AMOLED 1920×1200
Battery Type	Built-in battery/4200mAh + replaceable 18650 battery
Max. Operation Time, (t=22°C) h	6
Safety Class For Laser	Class 1
LRF, m	1000
MIC	Support
Memory Capacity, GB	64
IP Rating	IP67
Operating Temperature, °C	-20 ~ +55
Weight, g (Without Replaceable Battery)	<700
Dimension, mm	175.4×138×66

Get More Information



Website:
www.nocpix.com



User manual



Facebook

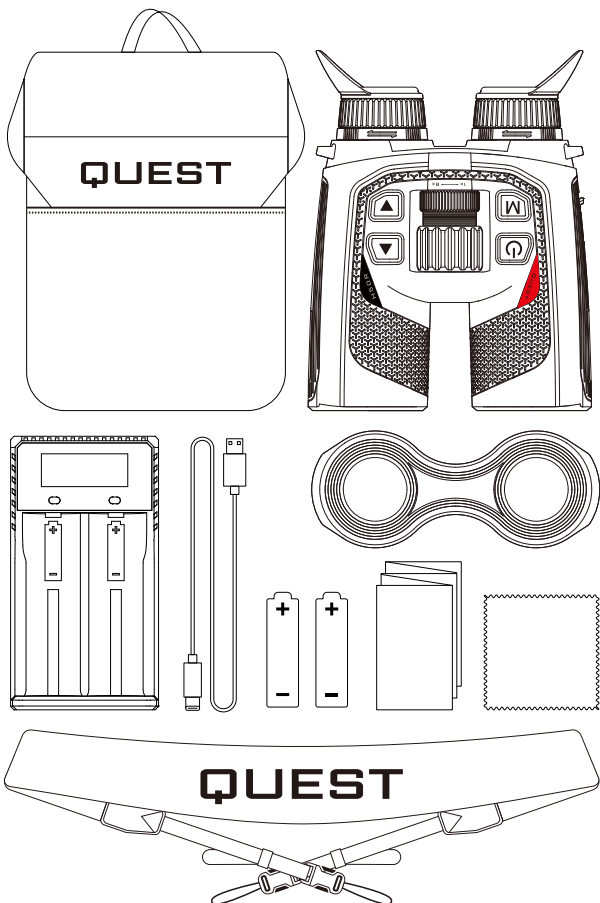


Instagram

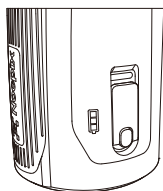


YouTube

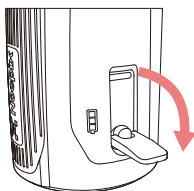
| Zubehör



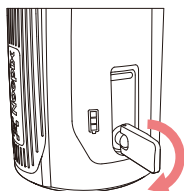
Batterie einbauen



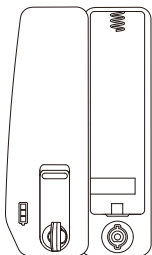
1



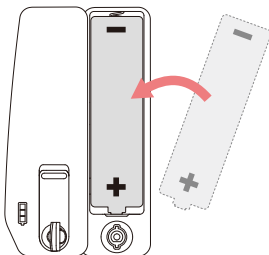
2



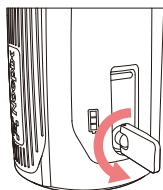
3



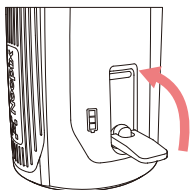
4



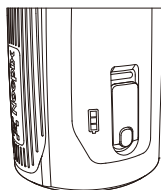
5



6

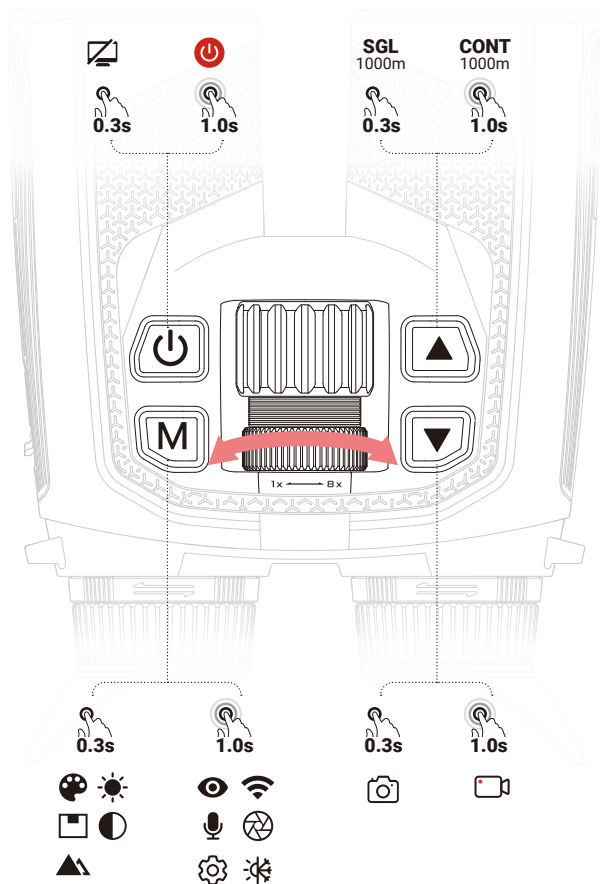


7



8

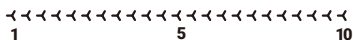
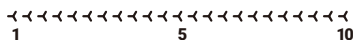
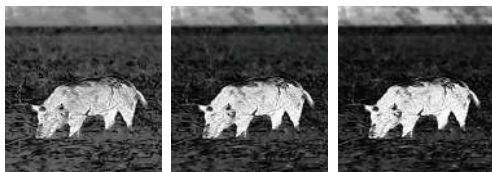
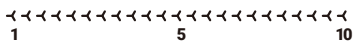
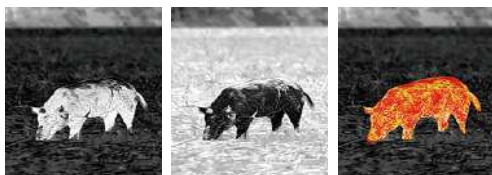
| Tastenbeschreibung



| Tastenbeschreibung



Kontextmenü

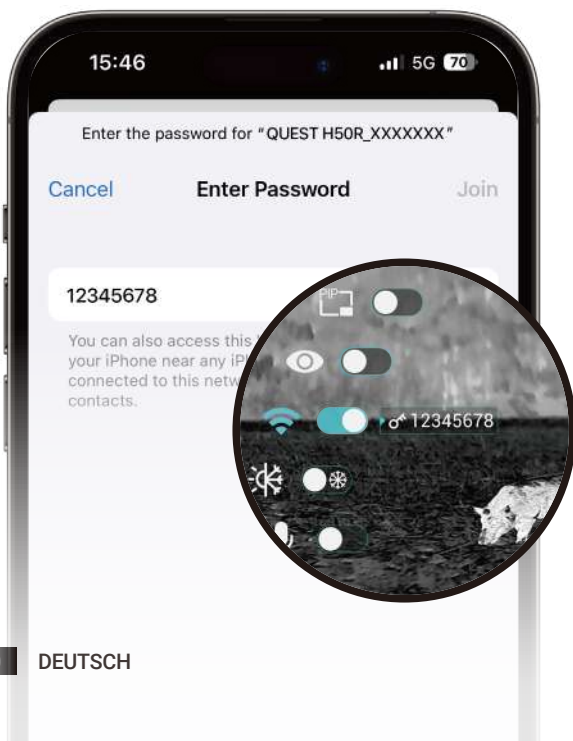


Hauptmenü







| App






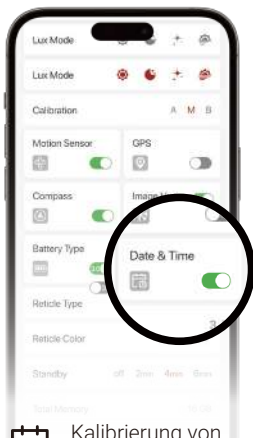
 Firmware-Upgrade



 Bildübertragung
in Echtzeit



 Gerätedatei



 Kalibrierung von
Datum und Uhrzeit

Spezifikationen

Modell	QUEST H50R	QUEST H35R
Auflösung, Pixel	640×512, 12µm	
NETD, mK	<15	
Bildfrequenz, Hz	60	
Objektivlinse, mm	50 F1.1	35 F0.9
Sichtfeld (H × V), °/m bei 100 m	8.8×7.0/15×12	12.5×10/22×18
Vergrößerung, ×	4~32	3~24
Detektionsreichweite, m (Zielgröße: 1,7 m × 0,5 m, P(n) = 99%)	2600	1800
Austrittspupille, mm	25	
Durchmesser der Austrittspupille, mm	10	
Dioptrie, D	±5	
Display	AMOLED 1920×1200	
Batterie	Eingebaute Batterie/4200mAh+ auswechselbare 18650-Batterie	
Max. Betriebsdauer (t=22°C), h	6	
Laser-Sicherheitsklasse	Class 1	
LRF, m	1000	
Mikrofon	Unterstützt	
Speicherkapazität, GB	64	
IP-Schutzart	IP67	
Betriebstemperatur, °C	-20 ~ +55	
Gewicht, g (ohne austauschbare Batterie)	<700	
Abmessungen, mm	175.4×138×66	

Modell	QUEST L35R
Auflösung, Pixel	384×288, 12µm
NETD, mK	< 15
Bildfrequenz, Hz	60
Objektivlinse, mm	35 F0.9
Sichtfeld (H × V), °/m bei 100 m	7.5×5.7/13×10
Vergrößerung, ×	5~40
Detektionsreichweite, m (Zielgröße: 1,7 m × 0,5 m, P(n) = 99%)	1800
Austrittspupille, mm	25
Durchmesser der Austrittspupille, mm	10
Dioptrie, D	±5
Display	AMOLED 1920×1200
Batterie	Eingebaute Batterie/4200mAh+ auswechselbare 18650-Batterie
Max. Betriebsdauer (t=22°C), h	6
Laser-Sicherheitsklasse	Class 1
LRF, m	1000
Mikrofon	Unterstützt
Speicherkapazität, GB	64
IP-Schutzart	IP67
Betriebstemperatur, °C	-20 ~ +55
Gewicht, g (ohne austauschbare Batterie)	< 700
Abmessungen, mm	175.4×138×66

| Weitere Informationen



Webseite:
www.nocpix.com



Benutzerhandbuch



Facebook

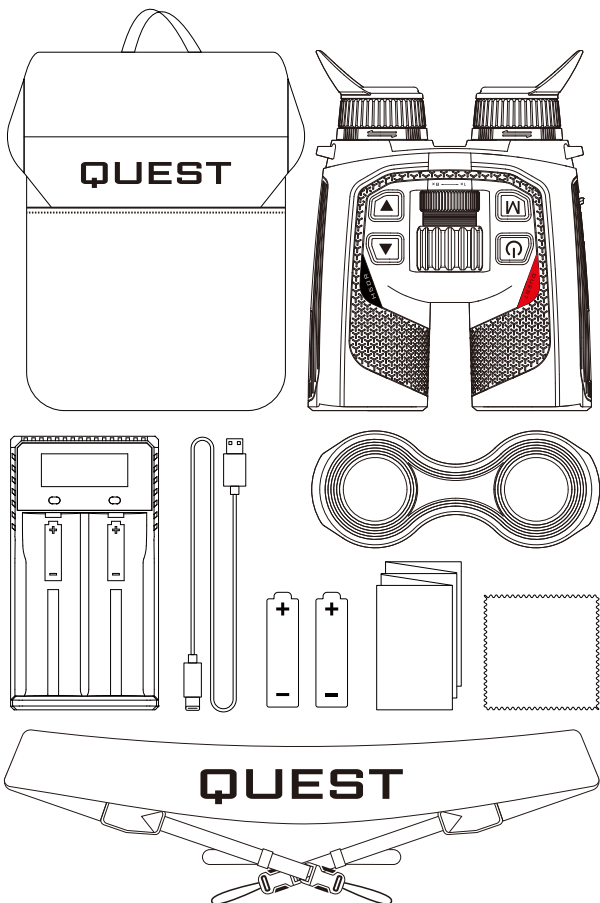


Instagram

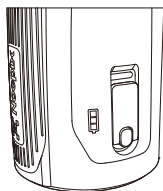


YouTube

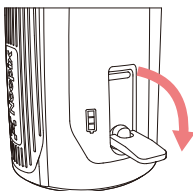
| Accessori



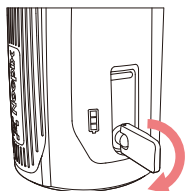
Batterie



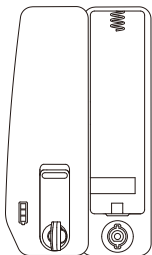
1



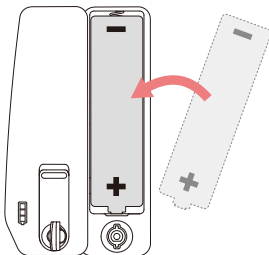
2



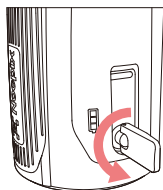
3



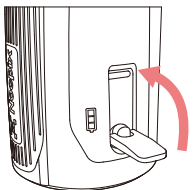
4



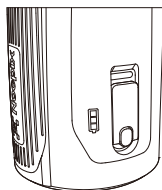
5



6

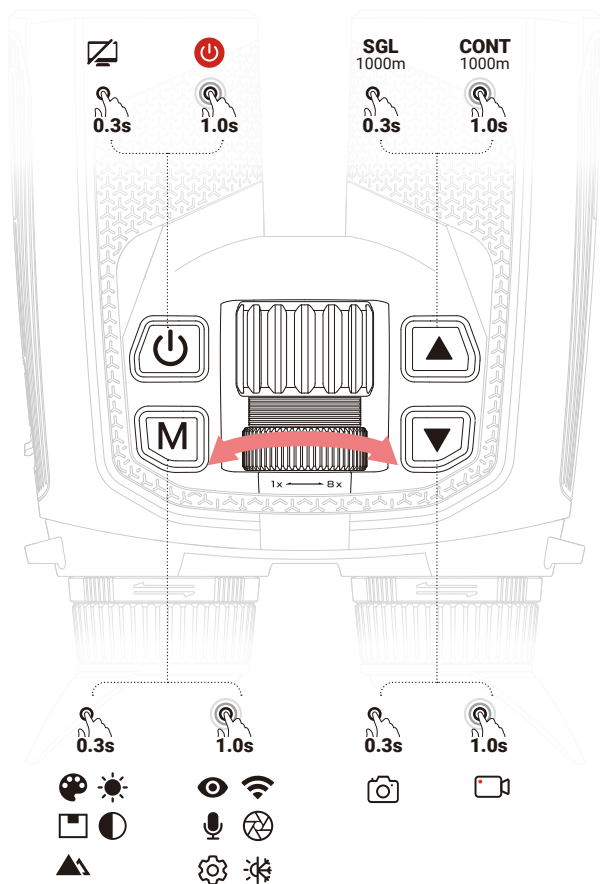


7



8

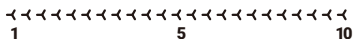
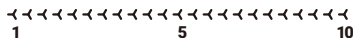
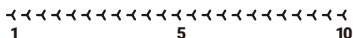
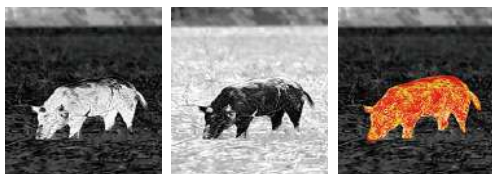
Descrizioni dei pulsanti



Descrizioni dei pulsanti



Menu di scelta rapida

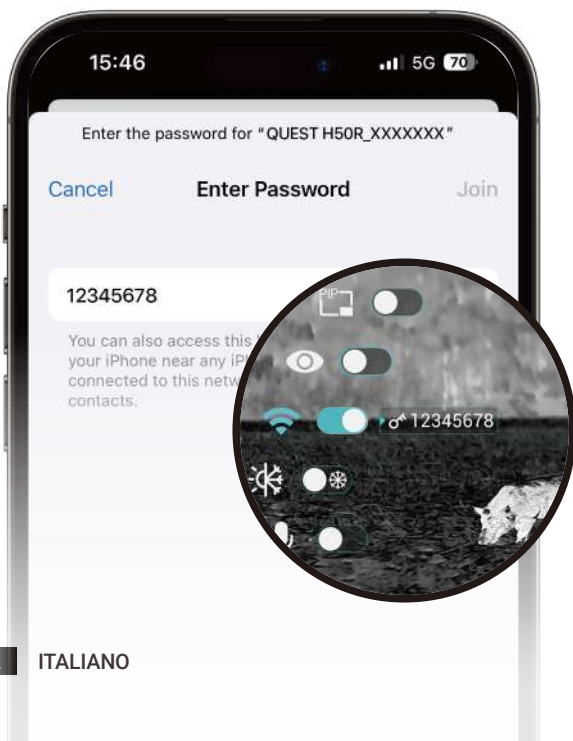


Menu principale





| App





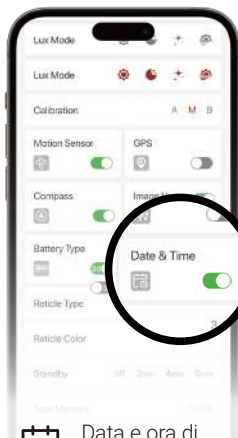
Aggiornamento
del firmware



Trasmissione di
immagini in tempo reale



File di dispositivo



Data e ora di
calibrazione

Specifiche

Modello	QUEST H50R	QUEST H35R
Risoluzione, pixel	640×512, 12µm	
NETD, mK	< 15	
Frequenza fotogrammi, Hz	60	
Lente dell'obiettivo, mm	50 F1.1	35 F0.9
Campo visivo (H × V), °/m a 100 m	8.8×7.0/15×12	12.5×10/22×18
Ingrandimento, x	4~32	3~24
Campo di rilevamento, m (Dimensione del bersaglio: 1.7 m x 0.5m, P(n)= 99%)	2600	1800
Distanza interoculare, mm	25	
Diametro pupilla d'uscita, mm	10	
Diottria, D	±5	
Display	AMOLED 1920×1200	
Batteria	Batteria integrata/4200mAh+ batteria 18650 sostituibile	
Tempo di funzionamento massimo (t=22°C), h	6	
Classe di sicurezza per il laser	Class 1	
LRF, m	1000	
MIC	Supporta	
Capacità di memoria, GB	64	
Classificazione IP	IP67	
Temperatura di funzionamento, °C	-20 ~ +55	
Peso, g (senza batteria sostituibile)	< 700	
Dimensioni, mm	175.4×138×66	

Modello	QUEST L35R
Risoluzione, pixel	384x288, 12µm
NETD, mK	<15
Frequenza fotogrammi, Hz	60
Lente dell'obiettivo, mm	35 F0.9
Campo visivo (H x V), °/m a 100 m	7.5x5.7/13x10
Ingrandimento, x	5~40
Campo di rilevamento, m (Dimensione del bersaglio: 1.7 m x 0.5m, P(n)= 99%)	1800
Distanza interoculare, mm	25
Diametro pupilla d'uscita, mm	10
Diottria, D	±5
Display	AMOLED 1920x1200
Batteria	Batteria integrata/4200mAh+ batteria 18650 sostituibile
Tempo di funzionamento massimo (t=22°C), h	6
Classe di sicurezza per il laser	Class 1
LRF, m	1000
MIC	Supporta
Capacità di memoria, GB	64
Classificazione IP	IP67
Temperatura di funzionamento, °C	-20 ~ +55
Peso, g (senza batteria sostituibile)	<700
Dimensioni, mm	175.4x138x66

Ottieni maggiori informazioni



Sito web:
www.nocpix.com



Manuale utente



Facebook

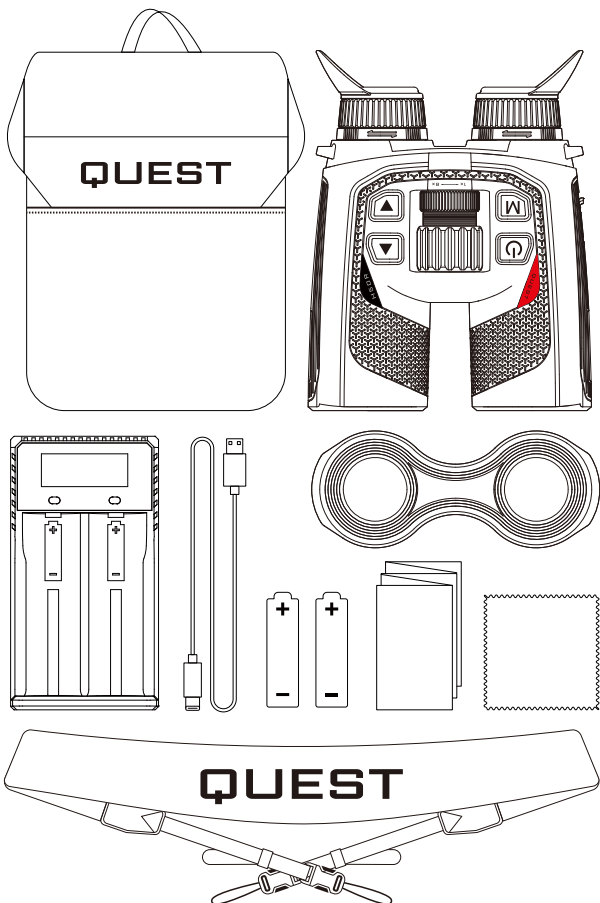


Instagram



YouTube

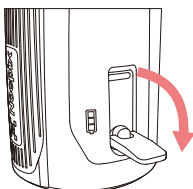
| Accessoires



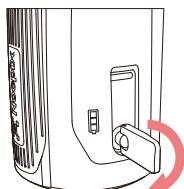
Installation de la batterie C



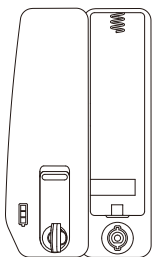
1



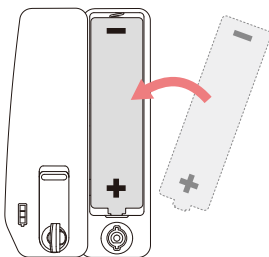
2



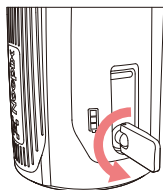
3



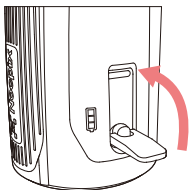
4



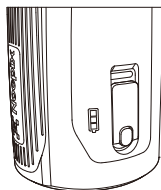
5



6

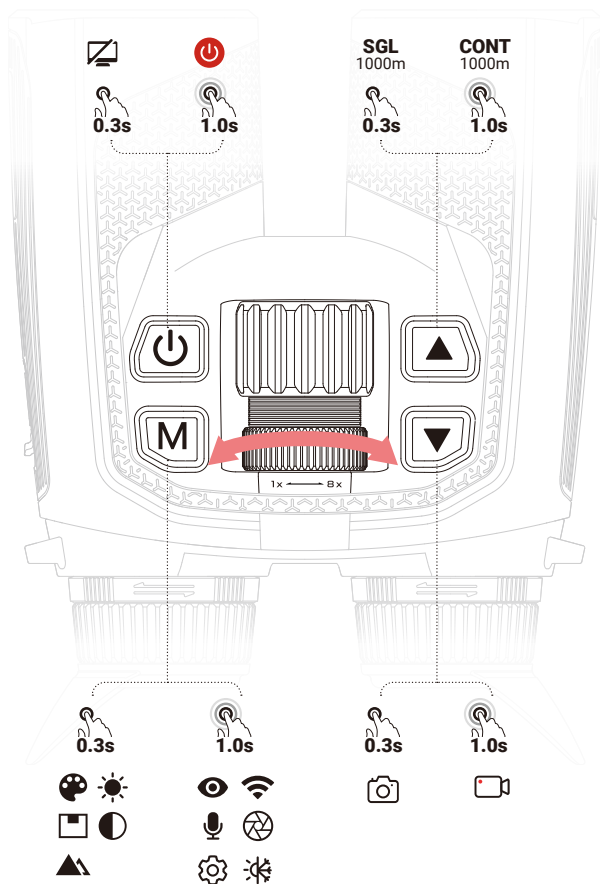


7



8

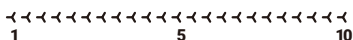
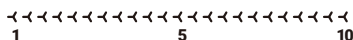
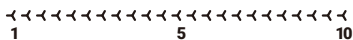
Description des boutons



Description des boutons



Menu contextuel



Menu principal



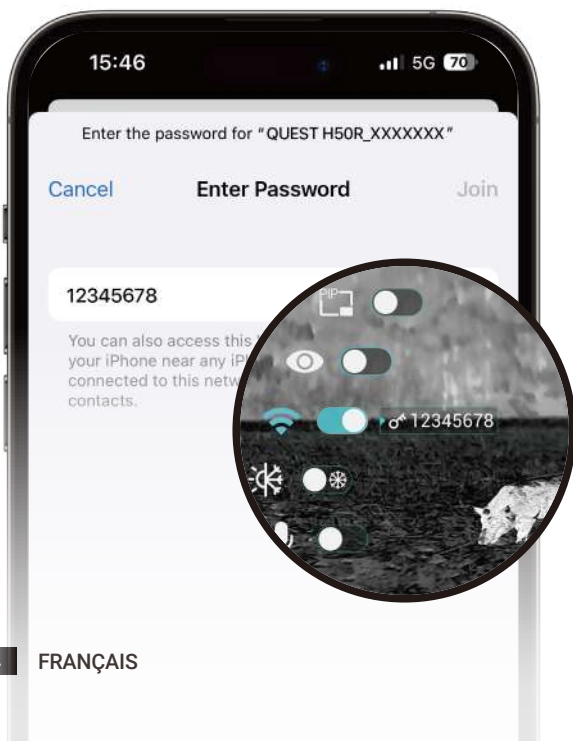
Show



Hide



| App





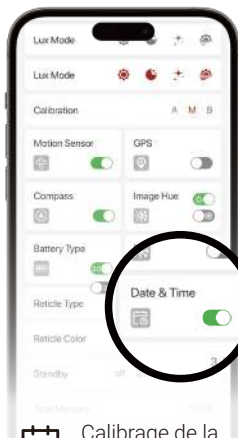
Mise à niveau
du micrologiciel



Transmission d'images
en temps réel



Fichier de
l'appareil



Calibrage de la
date et de l'heure

Spécifications

Modèle	QUEST H50R	QUEST H35R
Résolution, pixels	640×512, 12µm	
NETD, mK	<15	
Fréquence des frames, Hz	60	
Objectif, mm	50 F1.1	35 F0.9
Champ de Vision (H×V), °/m à 100 m	8.8×7.0/15×12	12.5×10/22×18
Grossissement, x	4~32	3~24
Portée de détection, m (Taille cible: 1.7 m x 0.5 m, P(n) =99%)	2600	1800
Distance oculaire, mm	25	
Diamètre de pupille de sortie, mm	10	
Dioptrie, D	±5	
Écran	AMOLED 1920×1200	
Batterie	Batterie intégrée/4200 mAh + batterie remplaçable 18650	
Autonomie maximale de la batterie (t=22°C), h	6	
Classe de sécurité pour le laser	Class 1	
LRF, m	1000	
MIC	Soutien	
Capacité de mémoire, Go	64	
Indice IP	IP67	
Température de fonctionnement. °C	-20 ~ +55	
Poids, g (sans batterie remplaçable)	<700	
Dimension, mm	175.4×138×66	

Modèle	QUEST L35R
Résolution, pixels	384×288, 12µm
NETD, mK	<15
Fréquence des frames, Hz	60
Objectif, mm	35 F0.9
Champ de Vision (H×V), °/m à 100 m	7.5×5.7/13×10
Grossissement, x	5~40
Portée de détection, m (Taille cible: 1.7 m x 0.5 m, P(n) =99%)	1800
Distance oculaire, mm	25
Diamètre de pupille de sortie, mm	10
Dioptrie, D	±5
Écran	AMOLED 1920×1200
Batterie	Batterie intégrée/4200 mAh+ batterie remplaçable 18650
Autonomie maximale de la batterie (t=22°C), h	6
Classe de sécurité pour le laser	Class 1
LRF, m	1000
MIC	Soutien
Capacité de mémoire, Go	64
Indice IP	IP67
Température de fonctionnement. °C	-20 ~ +55
Poids, g (sans batterie remplaçable)	<700
Dimension, mm	175.4×138×66

| En savoir plus



Site web:
www.nocpix.com



Manuel de l'utilisateur



Facebook



Instagram



YouTube